

Piedmontese Crossbreeding

- Calves grow faster due to hybrid vigor
- Calves have a higher hot hanging weight percentage
- Calves have a higher percentage of premium cuts
- No need for a hormone implants



Anaborapi Bull Uranus

- Better gains on grass
- Better heat and insect tolerance
- No increase in calving difficulties
- Continental and British crosses grade Choice

Small Calves that Grow Fast



Shorthorn-Piedmontese Calf

"Piedmontese crosses (200) have 92.5% unassisted calving, same as Herford, Angus, and Holstein crosses, and higher than other breeds."

- USDA Clay Center, Nebraska

"Breed Comparisons in the Germplasm Evaluation Program at MARC (Table 3), 1996"



Angus-Piedmontese Calf



Brahma-Piedmontese Calf

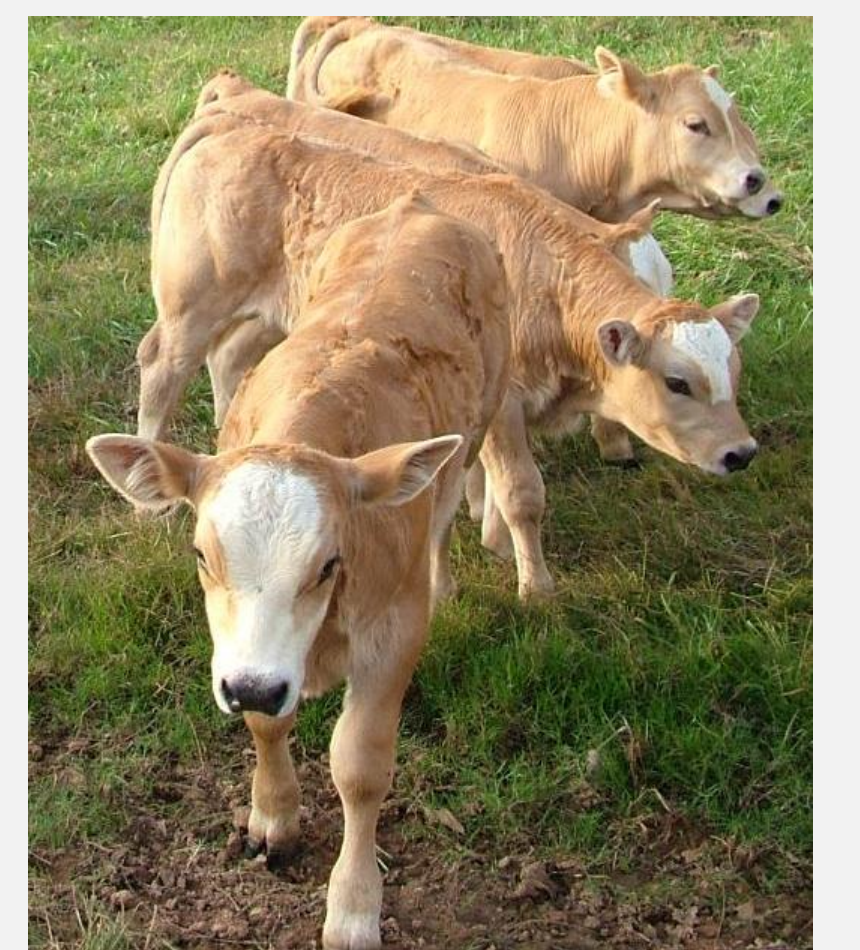


Beefmaster-Piedmontese Calf

More Meat, Higher Rate of Gain, More Premium Cuts



Simmental-Piedmontese Calves



Piedmontese Increase Meat Yields in Dairy Breeds



75% Piedmontese
25% Jersey

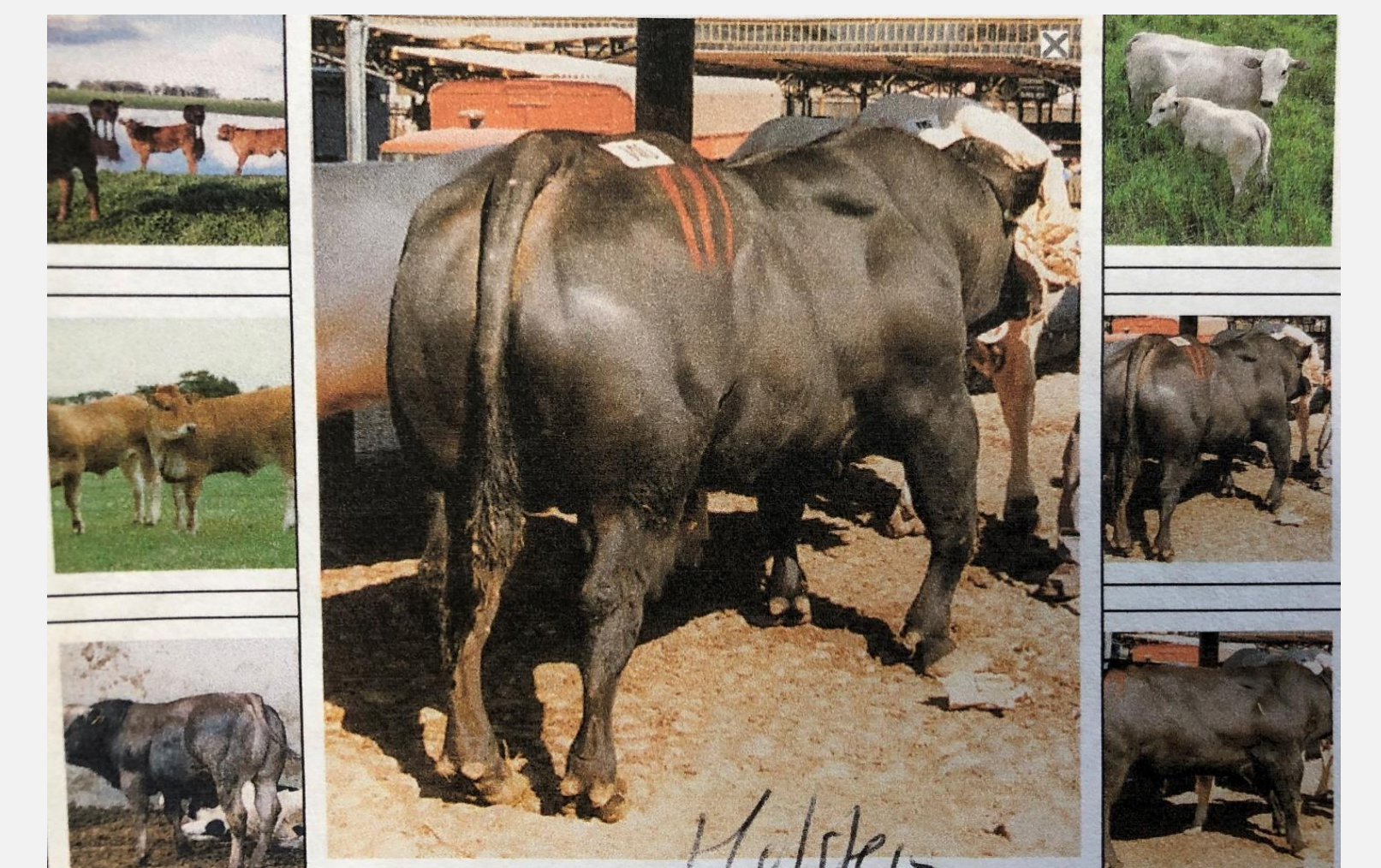


"Cold carcass weights were greater for the Piedmontese-cross heifers than for the Charolais-cross heifers, but were similar for the steers."

"In conclusion, the Piedmontese crosses had slower growth rates than Charolais crosses, but because of their superior dressing proportion the difference in carcass weight was proportionally less than the difference in slaughter weight."

"An evaluation of Piedmontese x Holstein-Friesian cattle for beef production" by Davis, Grundy, and Hardy

Irish Journal of Agricultural and Food Research. 38:201-208, 1999.



Piedmontese-Holstein Crosses

Comparisons of Piedmontese Crosses

	FR	PM	RO
Carcass Weight/Day	434 g 0.956 lbs	435 g 0.959 lbs	453 g 0.999 lbs
Kill-Out Proportion	519 g/kg 51.9%	547 g/kg 54.7%	538 g/kg 53.8%
Carcass Conformation Score	2.1	2.9	2.9
Carcass Fat Score	4.0	3.4	3.8
Pistola Carcass Side Weight Proportion	447 g/kg 44.7%	462 g/kg 46.2%	466 g/kg 46.6%
Pistola Muscle Proportion	642 g/kg 64.2%	716 g/kg 71.6%	687 g/kg 68.7%
Pistola Fat Proportion	165 g/kg 16.5%	115 g/kg 11.5%	137 g/kg 13.7%

FR: Friesian-Holsteins
PM: Piedmontese x Friesian-Holsteins
RO: Romagnola x Friesian-Holsteins

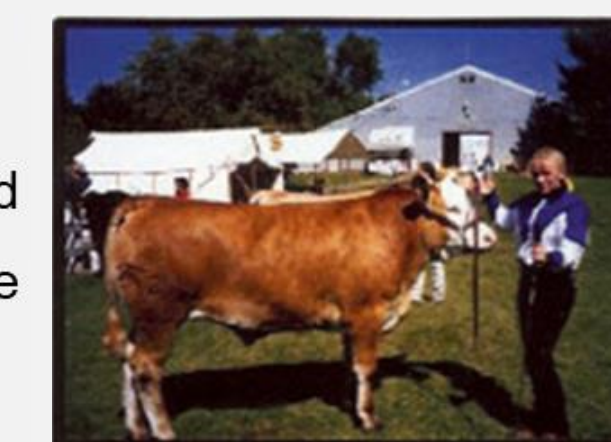
From USDA Clay Center Nebraska "Breed Comparisons in the Germplasm Evaluation Program at MARC", Tables 5 and 6, 1996:

Piedmontese Crosses	
683 lb Carcass Weight	485 lb Retail Weight
0.31 in Fat Thickness	13.19 in ² Ribeye Area
HIGHEST Retail Cut (73.4%)	LOWEST Fat Trim (14.3%) Bone (12.3%)

From the Georgia Bull Test for Two Fullblood Piedmontese Bulls:

	ADG	REA	FAT
Pied BCP57K	4.44	18.9	0.06
Pied BCP54K	4.54	18.0	0.07
Average All Bulls (British, Continental)	4.06	14.0	0.2-0.48

50% Herford
50% Piedmontese



50% Longhorn
50% Piedmontese



50% Limousin
50% Piedmontese



50% Angus
50% Piedmontese

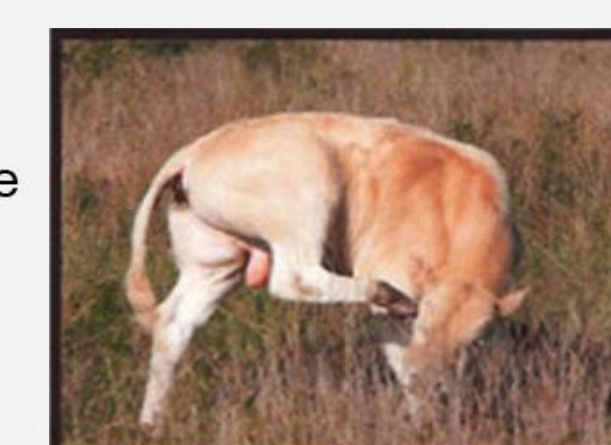


Cow: 50% Longhorn
50% Piedmontese



50% Simmental
50% Piedmontese

Calf: 75% Piedmontese



75% Piedmontese

25% Angus
75% Piedmontese



"A comparison of Friesian-Holstein, Piedmontese x Friesian-Holstein, and Romagnola x Friesian-Holstein steers for beef production and carcass traits" by Keane and Allen (edited for space)

Livestock Production Science Vol 78, Issue 2, 2 December 2002, 143-158

Name/ID	Sex	Age	Breed	C313	Live Weight	Hang Weight	Rail Loss	Rail %	Industry Variance 39% Base	Net Pack Weight	Net Loss	Net %	Total Loss	Total % Loss	Industry Variance 29.5% Base	68.5	Retail Value on Net Pack Weight
High Percentage Pied Bull	Bull	48 mo	High % Pied	1	NA	1234	NA	NA	NA	814	420	34.04%	NA	NA	NA	NA	\$8,140.00
Percentage Shorthorn Steer	Steer	34 mo	60% Shorthorn 40% Pied	0	1835	1187	648	35.31%	3.690%	782	405	34.12%	1053	57.38%	-7%	69.43%	\$7,820.00
Percentage Shorthorn Steer	Steer	24 mo	60% Shorthorn 40% Pied	1	1458	820	636	43.68%	-4.680%	593	227	27.68%	863	59.27%	2%	71.36%	\$5,930.00
Percentage Shorthorn Steer	Steer	27 mo	60% Shorthorn 40% Pied	0	1250	715	535	42.80%	-3.800%	473	242	33.85%	777	62.16%	-5%	76.65%	\$4,730.00
High Percentage Pied Steer	Steer	28 mo	High % Pied	2	1410	926	484	34.33%	4.670%	772	154	16.63%	638	45.25%	14%	50.96%	\$7,720.00
High Percentage Pied Steer	Steer	34 mo	High % Pied	1	1353	846	507	37.47%	1.528%	652	194	22.93%	701	51.81%	7%	60.40%	\$6,520.00
High Percentage Pied Steer	Steer	36 mo	High % Pied	2	1254	773	481	38.36%	0.643%	643	130	16.82%	611	48.72%	13%	55.17%	\$6,430.00
High Percentage Pied Heifer	Freemartin	36 mo	High % Pied - Twin	1	1109	679	430	38.77%	0.226%	538	141	20.77%	571	51.49%	12%	59.54%	\$5,380.00

Yields of Meat for One-Copy Piedmontese Cattle
Courtesy of Rockin SJS Farm Texas